

FOR FURTHER INFORMATION

OÑATI TORIST OFFICE
San Juan Kale, 14
20560 Oñati
Tel: 943-783453
turismo@oinati.org

**AGENCY FOR THE DEVELOPMENT
OF THE TOURISM IN OÑATI**
Tel: 943718808
ogta@oinati.org

Note: it is recommended to bring warm clothing and appropriate footwear for the runway of drain.

WWW.OINATI.ORG



ARRIKRUTZ

The Oñati caves



THE OÑATI-ARRIKRUTZ CAVES

The countryside around Oñati is very interesting and beautiful. Among other things, close to the Arantzazu Sanctuary and below the Aizkorri massif, the town has a very attractive, imposing karst (scenery typical of a limestone region), with a very extensive and complex system of potholes.

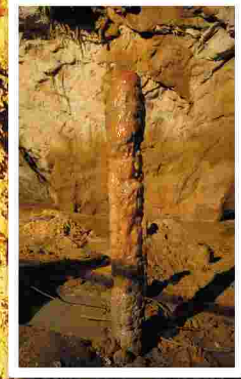
Arrikruz was one of the first sites to be explored in potholing, archaeological and palaeontological terms in the Basque Country. The initial work led to the discovery of palaeontological remains such as:

- A complete skeleton of a cave lion, the first find of this type in Spain.
- Partial panther skeletons and craniums.
- An impressive bear site.

After four years of work, the Arrikruz caves will open to the public in 2007.

A number of studies have therefore been carried out to obtain detailed information about the physical, environmental and cultural aspects of the cave.

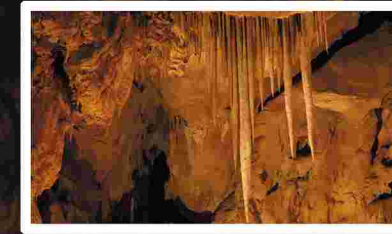
As part of the project, a highly advanced computer system will be developed to guide the visits and provide information about the various historic, ethnographic, geological and mineral features to be found in the caves.



THE VISIT OF ARRIKRUTZ

During the 60 minutes that it will take to walk through the cave, the system will cover the following subjects in an attractive, educational way:

- Water and hydrology as the sculptors of the caves.
- The Arrikruz cave as just part of the more than 14 km of the vast, complex Gesaltza-Arrikruz sinkhole system.
- The geological formation of the cave and an appreciation of its beauty, which includes a subterranean river and a gallery full of enormous stalactites.
- The origin of the mineral universe.
- The archaeological and palaeontological finds in Arrikruz.
- The importance of Arrikruz in the history of potholing.



GEOGRAPHIC AND GEOLOGICAL SITUATION OF THE OÑATI-ARRIKRUTZ CAVES

The Oñati-Arrikruz caves are located in the municipality of Oñati, the province of Gipuzkoa.

It is accessed from the freeway A-8 and AP-1 from Donostia and Bilbao, and by the GI-627 highway from Vitoria-Gasteiz, take the GI2630 at the crossing from San Prudencio in the direction of Oñati, from here head towards the sanctuary of Arantzazu.

Before reaching Arantzazu take the crossing of the district of Araotz. After a kilometer we'll find the parking of the caves.

The countryside around Oñati contains a number of elements of great interest and value. This unique attraction in the Oñati-Arrikruz karst, located near the Arantzazu sanctuary under the Aizkorri massif, has been made with the

objective to inject new life and value into Oñati's natural, social and cultural environment by means of a highly advanced computer system which will provide internal guidance and information on a number of archaeological, ethnographical and speleological attractions.



KILOMÉTRIC DISTANCES TO THE CAVES OF ARRIKRUTZ

Donostia (83 km), Bilbo (79 km), Vitoria-Gasteiz (54 km.)

TIMETABLE :

From Tuesday to Sunday (closed on Mondays)
 March-May and October 10:00-14:00/ 15:00-18:00
 June-September 10:00-14:00/ 15:00-19:00
 November-February 10:00-14:00/ 15:00-17:00
 Festivals, Easter, and Vacations, it will be opened in June-September schedule.

PRICES

Adults 8 €
 Retired people and Children (4-10 years old) 6€
 (0-3 years old, free entrance accompanied by an adult)
 Groups (for groups of more than 15 people) 6€

TELEPHONE 943-082000